

IoT-fy IoTMap IoTtest

Tom van de Ven

Senior Testconsultant High Tech

@Tomvanden

TestExpo 2016, Helsinki



IoT-fy: From ('Trojan Room') coffee machine



to full IoT solution for coffee



Source: <http://www.jawbone.com>, <http://www.dhl.com>, <http://www.topbrewer.com>

Less functional testing?



IoTMap: Focus on other quality attributes

Installability

Interoperability

Performance





**Automotive, image recognition,
connectivity, interoperability**

BI

Mobile

**High
Tech**

Security

Cloud

Map: Combining test expertise

Shopping (behavior)?

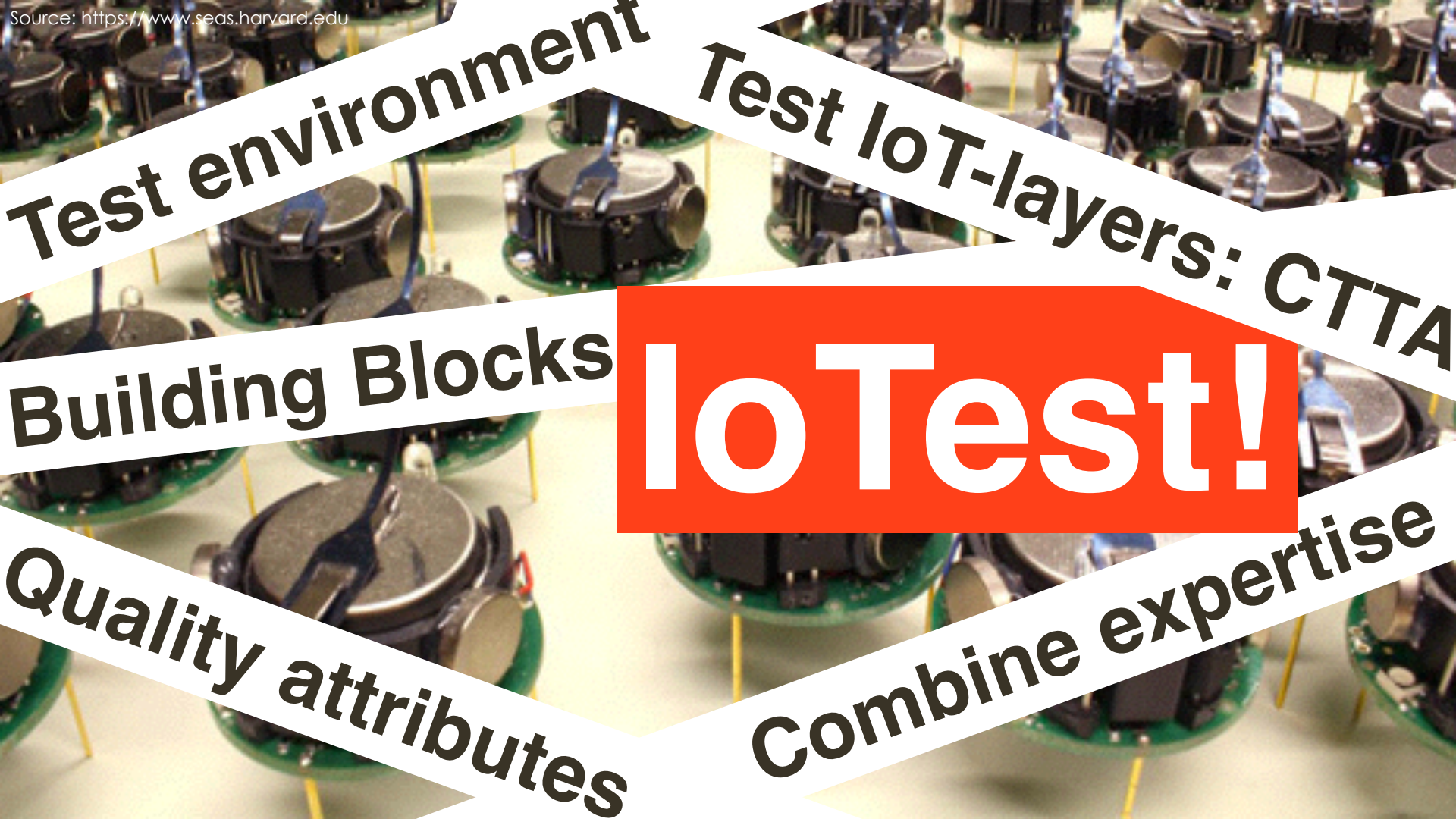




**Crowd
testing**

**Story
telling**

IoTMap: Test the IoT experience



Test environment

Test IoT-layers: CTTA

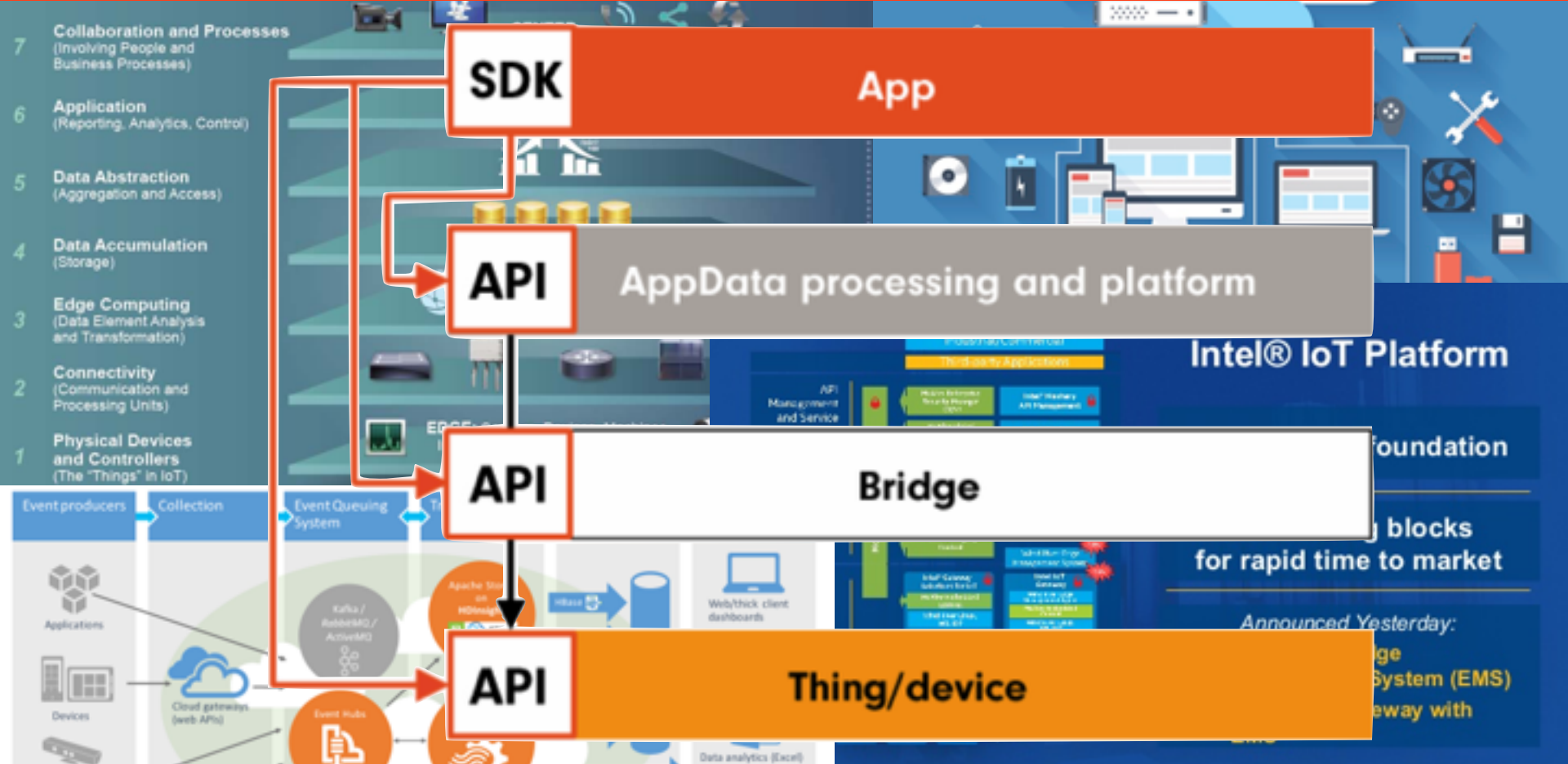
Building Blocks

IoTTest!

Quality attributes

Combine expertise

IoT model



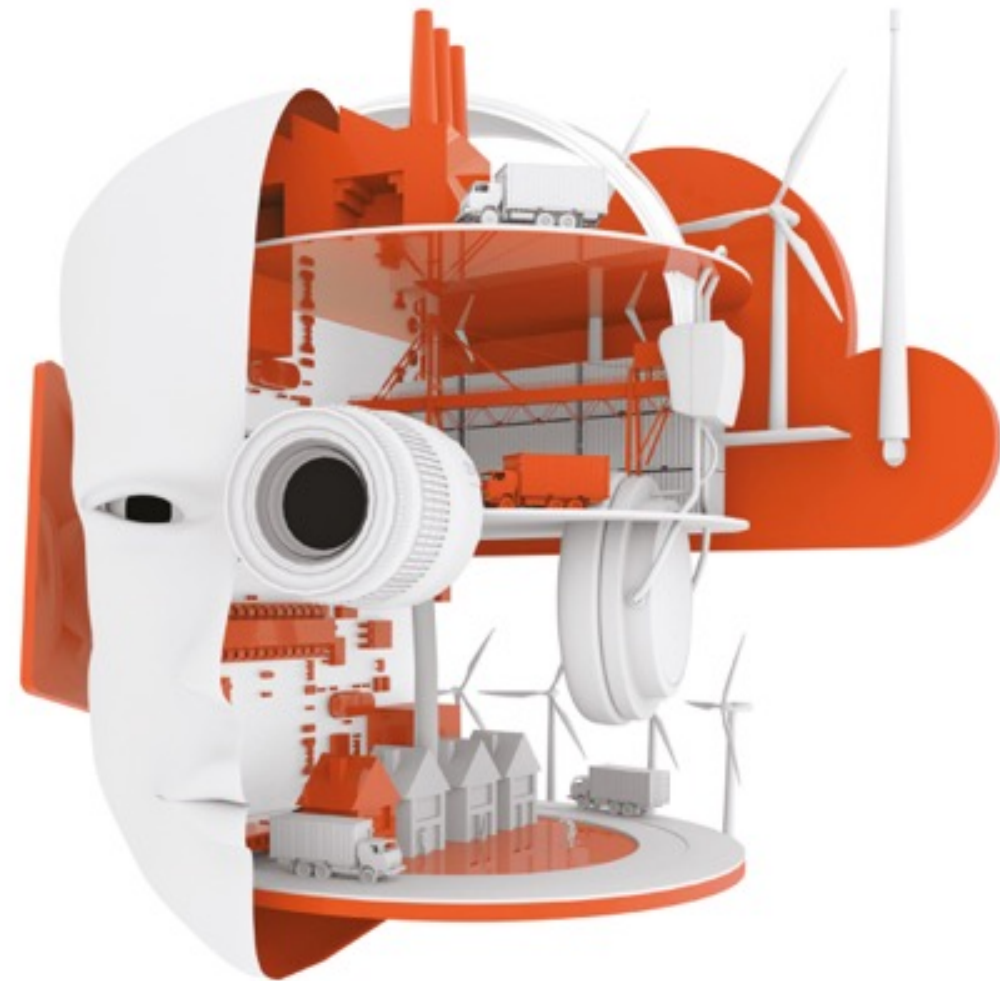
Connect

Talk

Think

Act





IoTMap contains:

Introduction

Background

IoT Model

An IoT test approach in five steps

Quick Tech Testing

High-tech test automation

Building Blocks

Testing for Physics and Systems

IoTMap

- ▶ **Less functional,
more non-functional
testing**
- ▶ **Combine testexpertise**
- ▶ **Test de IoT experience**

