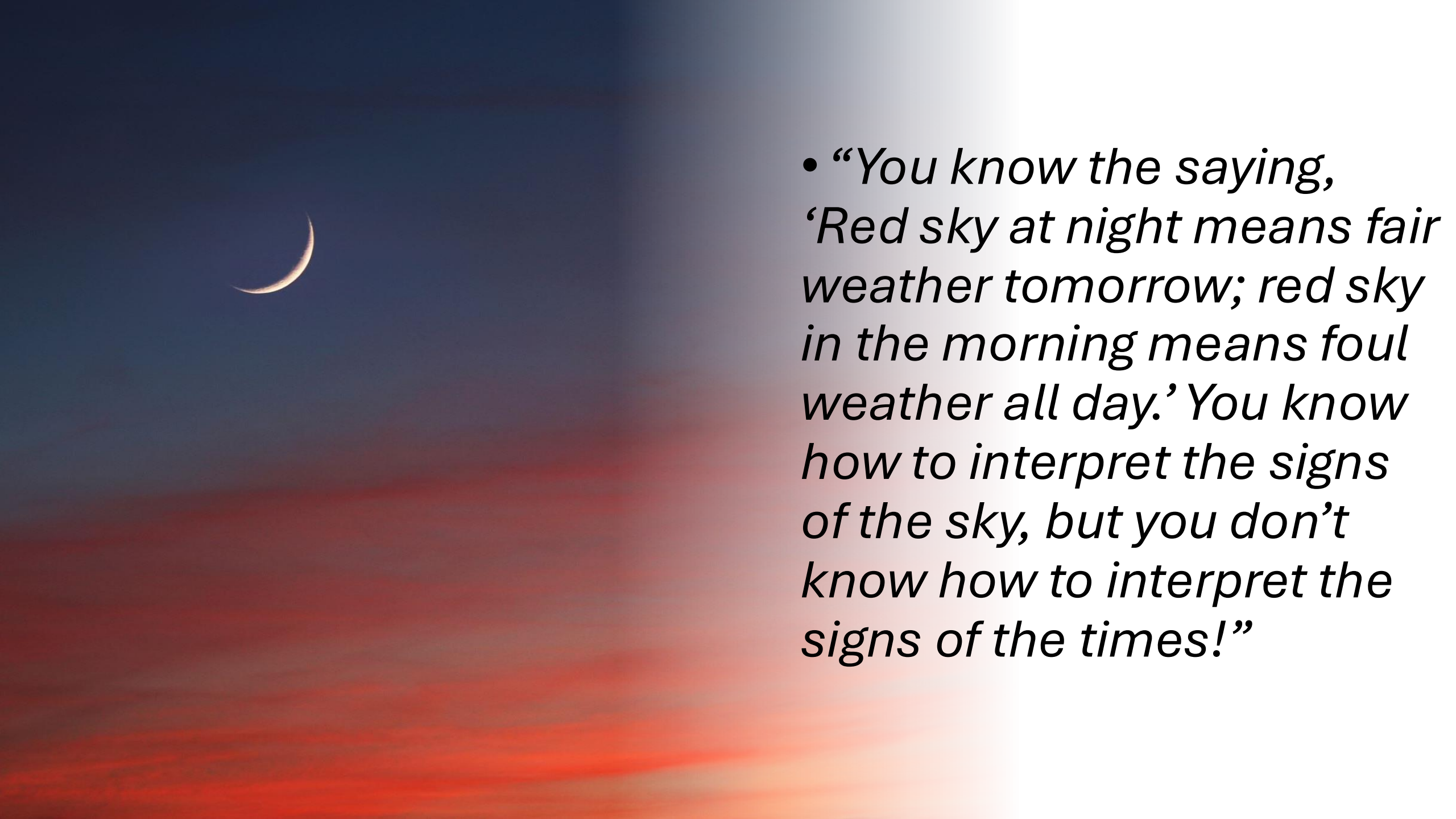


Deep Engagement & Real Smart Solutions

ShagowAskee Foundation Sugu Thuraisamy



- 
- *“You know the saying, ‘Red sky at night means fair weather tomorrow; red sky in the morning means foul weather all day.’ You know how to interpret the signs of the sky, but you don’t know how to interpret the signs of the times!”*

Management & Economic Systems

How Can We Be Stewards of Regenerative Intelligence?



**DEEP
ENGAGEMENT**



**REGENERATIVE
INTELLIGENCE**



**REGENERATIVE
ECONOMICS**

HUMAN NATURE MACHINE

Why Be Stewards of Regenerative Intelligence?



ASSURANCE

**REGENERATIVE
ECONOMICS**



**CLOSING the
INEQUALITY GAP**



**HEALING the
PLANET**

RESTORING RENEWING REVITALIZING
ECOLOGICAL SOCIAL ECONOMIC



Deep Engagement

GRASSROOTS



KNOWLEDGE



People

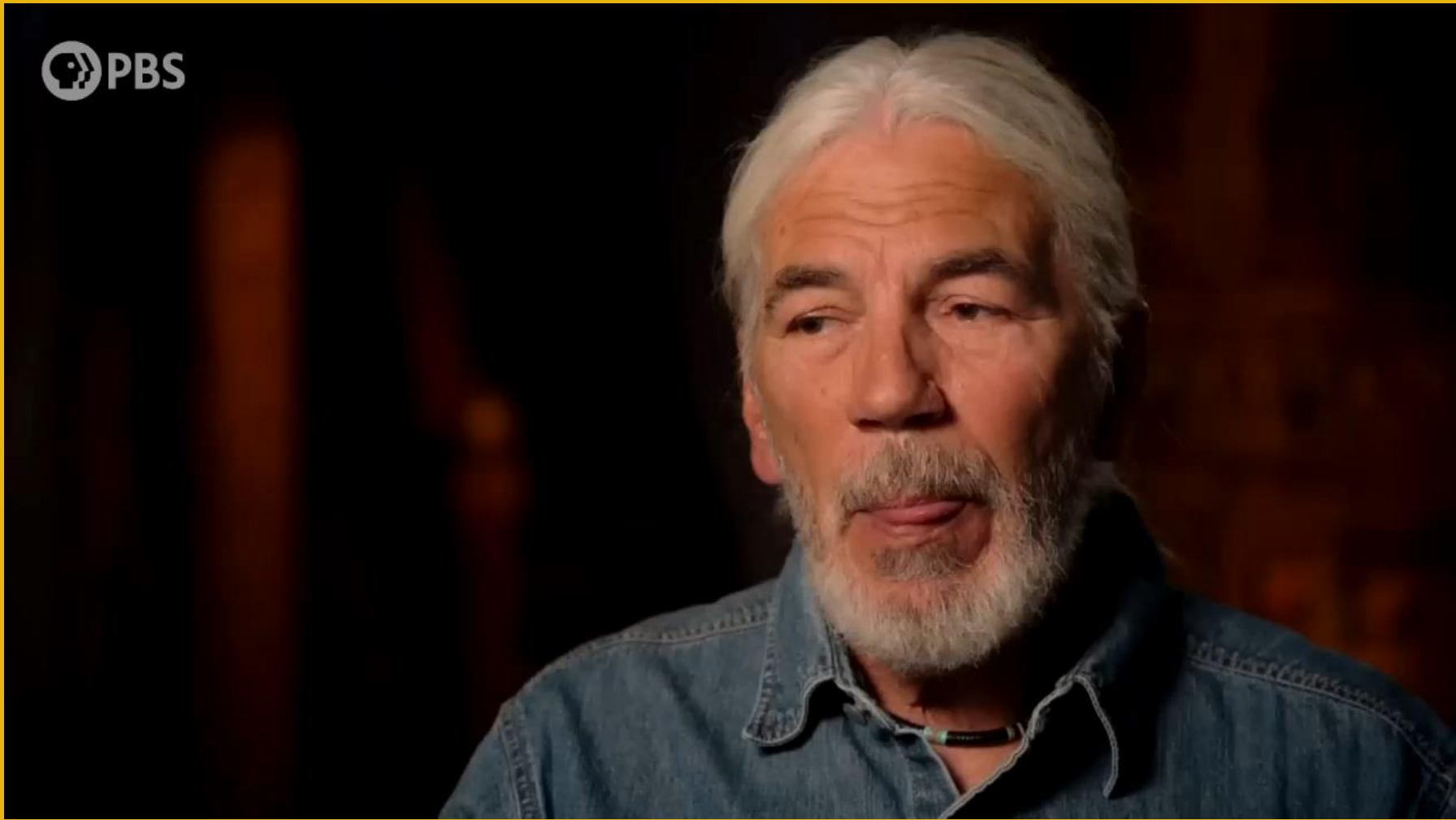
Ecosystems

Technical

Proper Development & Use of Traditional Knowledge, Science, Data + AI

Socio-Political

Societal + Business Value Creation



Case Study





Significance of Protecting the Wabasca Wood Buffalo Herd

1. **Uninterrupted, ongoing spiritual and cultural relationship** between indigenous communities and the Buffalo.
2. The herd is **genetically differentiated** from other herds and has unique genetic variants not found in other populations → unique evolutionary history resulting in none of the herd having disease.
3. **Legal.** Treaty Rights (Hunt, Fish, Trap, Gather...continue way-of-life). Federal Imminent Threat Assessment. (Food Security & Economic)
4. **Reconciliation.**

Federal Imminent Threat Assessment

Resource development in the
Range poses a threat to recovery



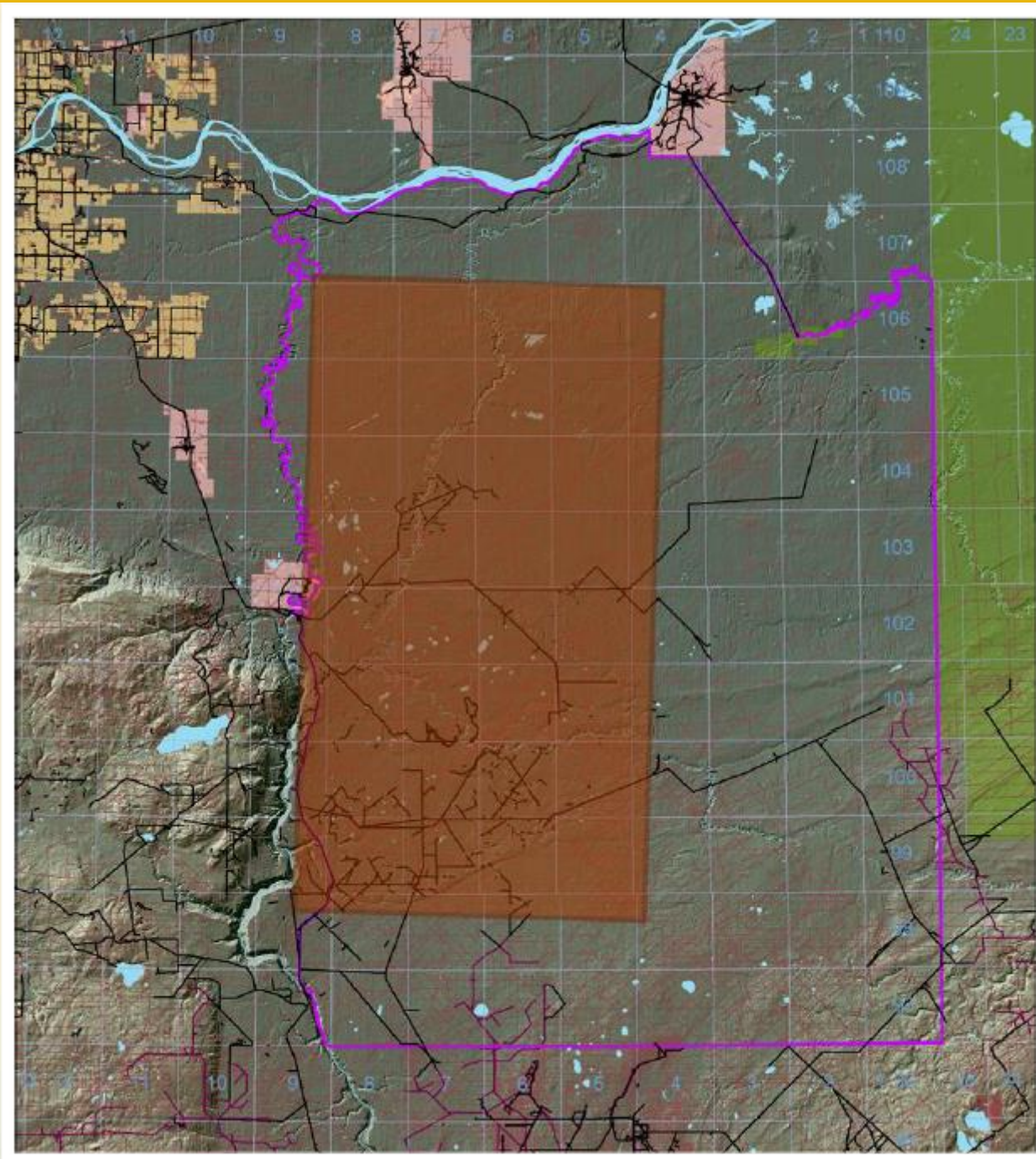
Canada 



Indigenous Knowledge Range

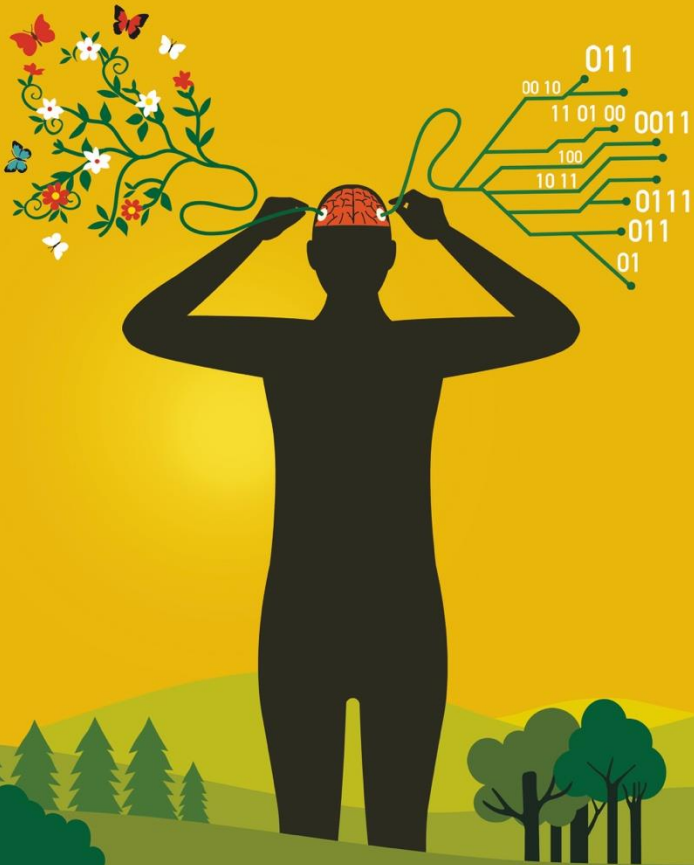


Government Range (2004). In this general area in the 1990s there were 150 Wood Buffalo.





Public Domain
Government Range
(2019)

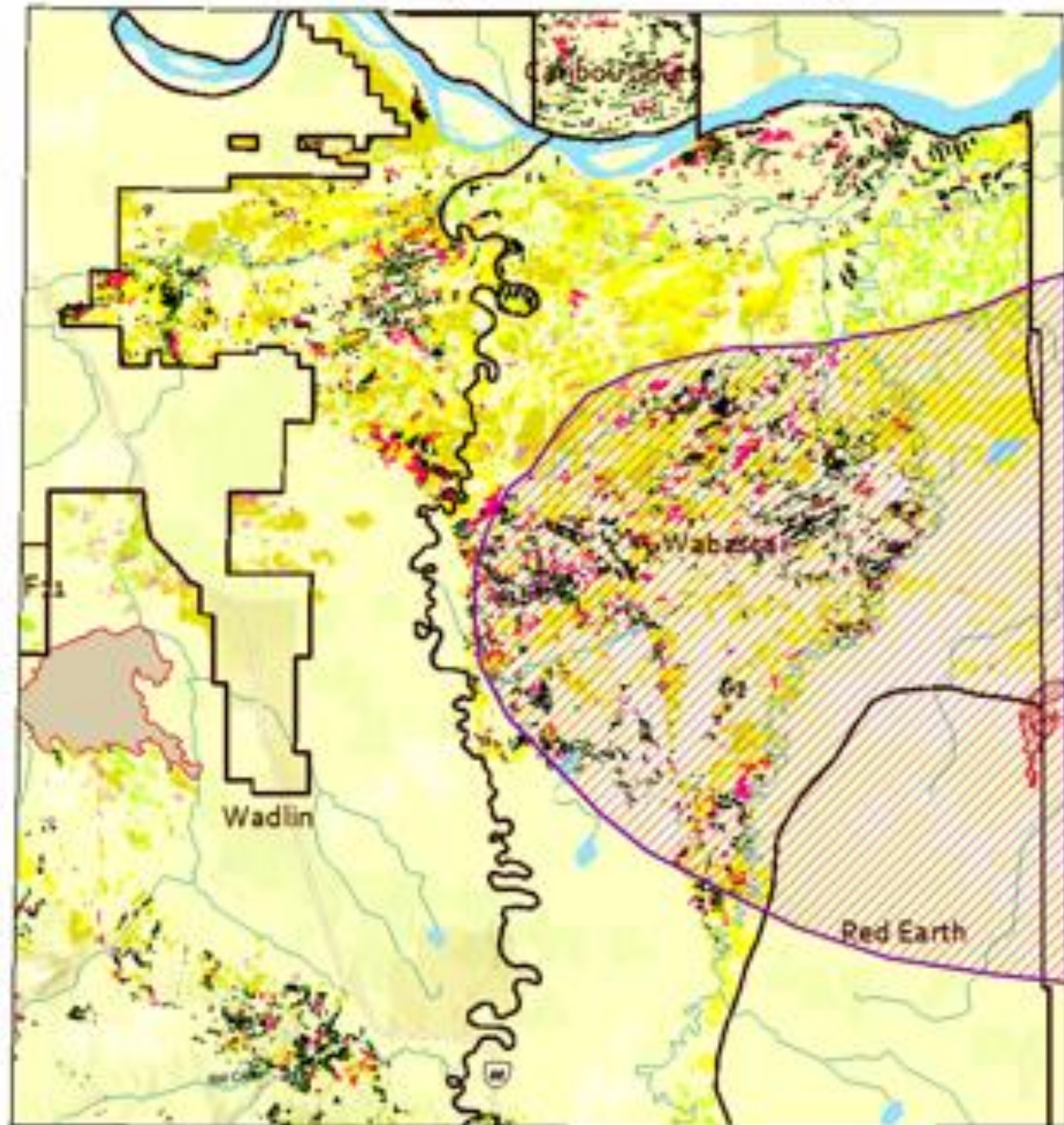


Two Ways that Regenerative Intelligence Can Proceed

Using Data to Rationalize that everything will be okay



Government Range (2019)





Knowing What is
Known



What Decision is
Wise?



Traditional Knowledge

From knowledge to field data-collection

A satellite image of a forested landscape with a winding river. The image shows a dense green forest with a prominent, winding river that flows from the upper left towards the lower right. The terrain appears to be hilly or mountainous, with the river carving a path through the forest. The overall color palette is dominated by various shades of green and brown, representing vegetation and soil respectively.

Satellite images

From pixels to numbers



Regenerative Intelligence

From Human, Natural, and Machine
Intelligence to insights



Your Challenge

What kind of prosthetic will you create?

Who will be the Stewards of its development?

A Good Prosthetic



- Narrows in the Inequality Gap
- Helps the Planet Heal

A Bad Prosthetic



- Widens in the Inequality Gap
- Makes worse the Climate Crisis



My Personal Worry

Being consistent with the Signs of the Time means addressing, in a just way, how the Tragedy of the Commons will not take seed in Regenerative Economics. Else, the animals will be angry with us, maybe more so than now. But that can be a healthy worry because if we keep it in mind, then we can build the right prosthetics together

